

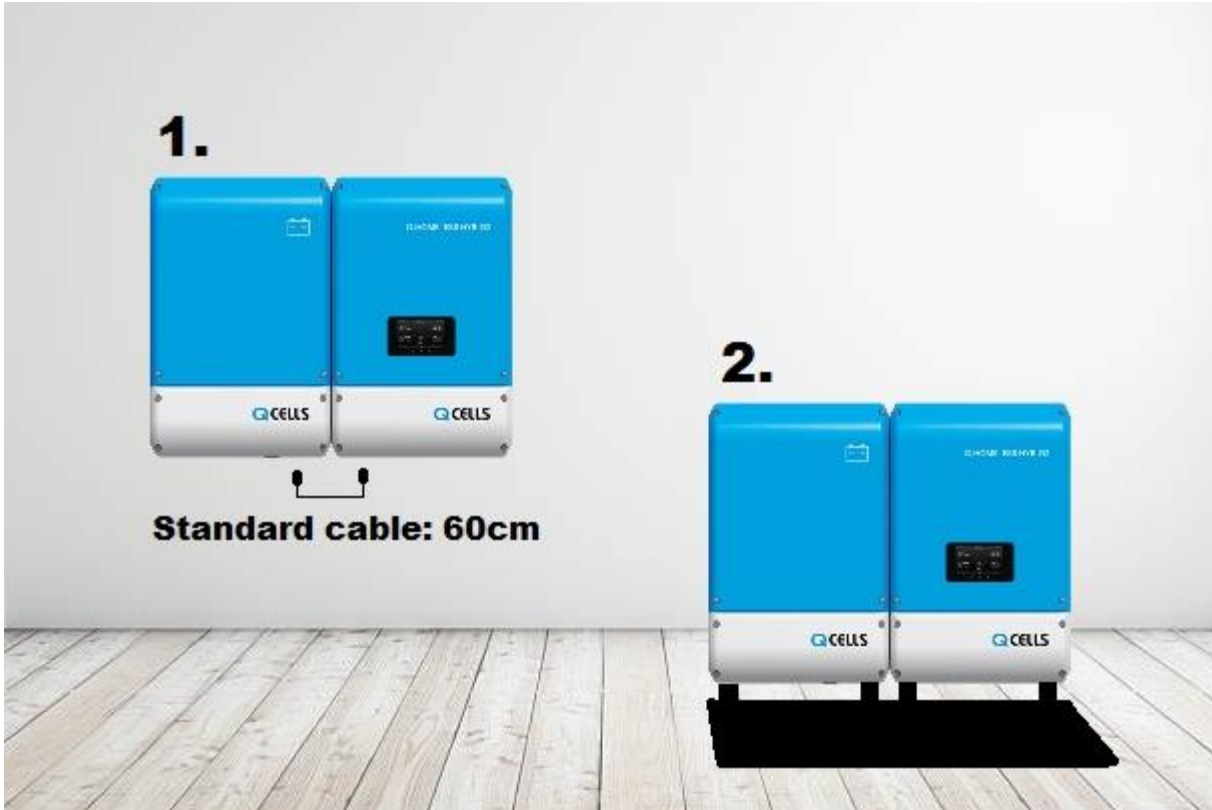
# Q.HOME+ESS HYB-G2 INSTALLATION TRAINING

Hanwha Q CELLS Australia | Jun 2020 | Australia

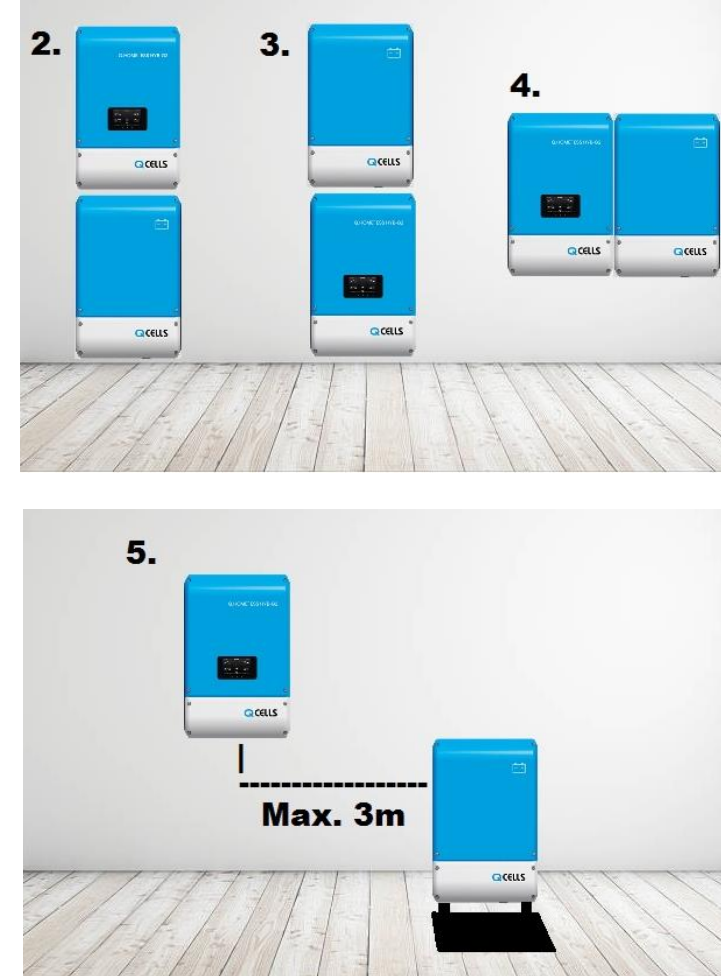


Link: [https://www.youtube.com/watch?v=N\\_zz5S9XSyM](https://www.youtube.com/watch?v=N_zz5S9XSyM)

## Standard Install



## Cable Extension Required



Option List



[ Figure 3-5 : Option List ]

No.	Part Name	Code No.	Quantity
*A	T Distributor	752901202000000	*
B	BMS Communication Cable (1m or 2m)	752647202000000	1
*C	Cable Gland for power cables	752603202000000	*
D	Floor Mount (470 x 380 x 787 mm) for Europe	752904202000001	1
	Floor Mount (470 x 380 x 787 mm) for Australia	752904202000002	1

\* A : Adaptor

- If using more than one battery, a separate adaptor is required. (Adaptor is an accessory, requires separate purchase)

- 2 Batteries → 1ea / 3 Batteries → 2ea / 4 Batteries → 3ea / 5 Batteries → 4ea

\* C : Cable Gland

- INVERTER → 3ea (Grid, Load, Battery) / Battery → 2ea

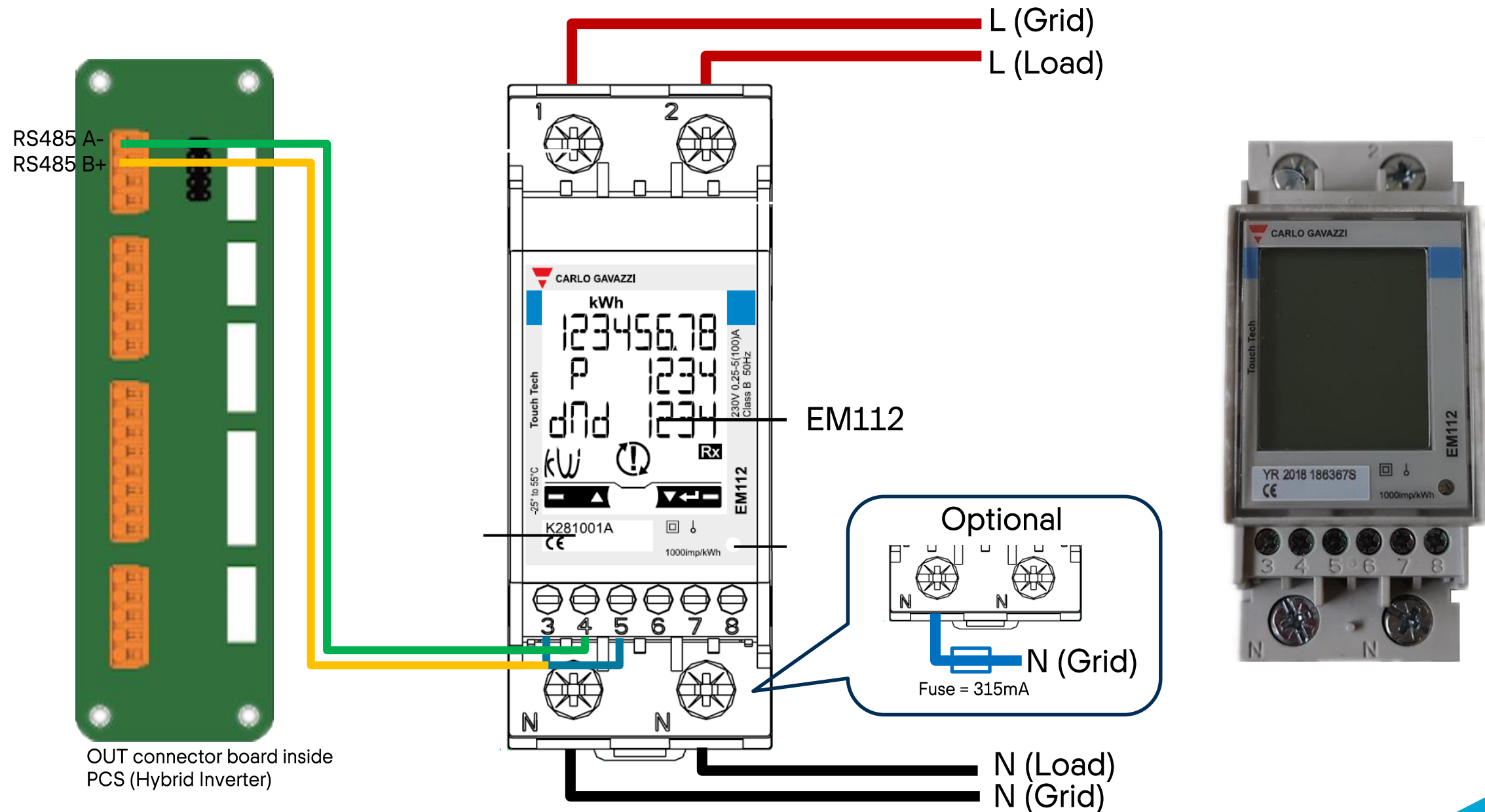
# ENERGY METER GUIDE



# TABLE OF CONTENTS

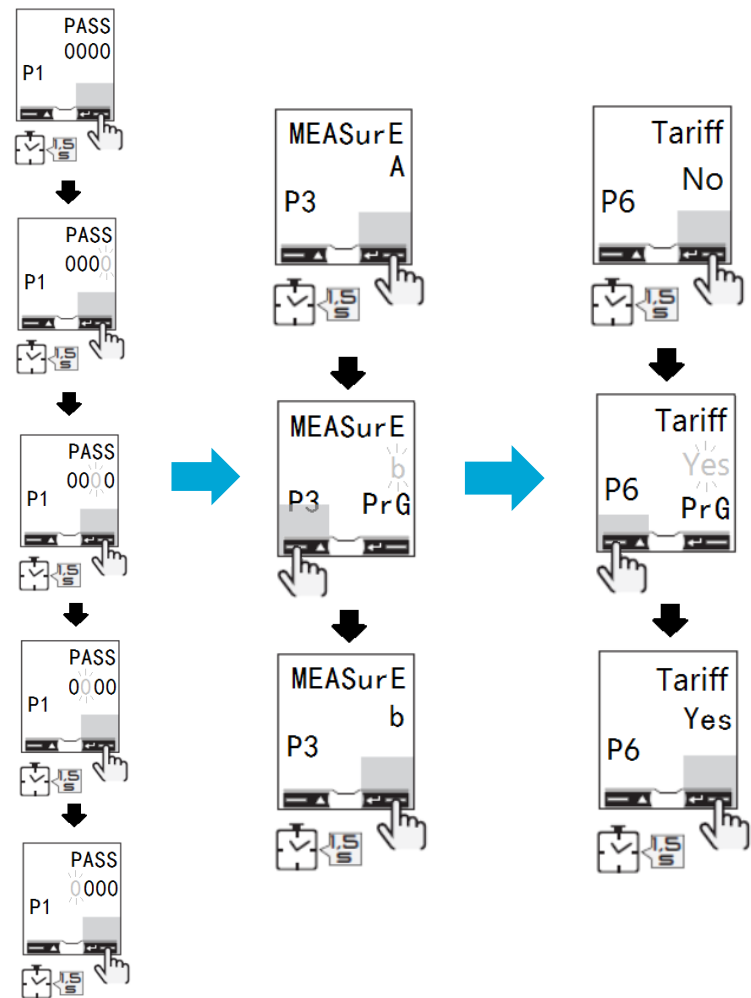
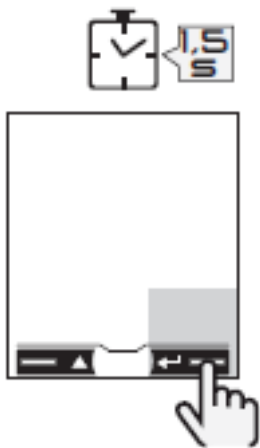
<b>01.</b>	<b>EM112 Wiring connections</b>	<b>03</b>
01.1	EM112 Settings Configuration	04
<b>02.</b>	<b>EM24 Wiring Connection</b>	
02.1	EM24 Wiring connections (Three Phase)	05
02.2	EM24 Wiring connections (Single Phase)	06
02.3	EM24 Settings configuration	07
<b>03.</b>	<b>EM24 CT wiring connections</b>	<b>08</b>
02.1	EM24 CT Setting Configuration	09

# EM112 Wiring Connection



## Steps to change parameters

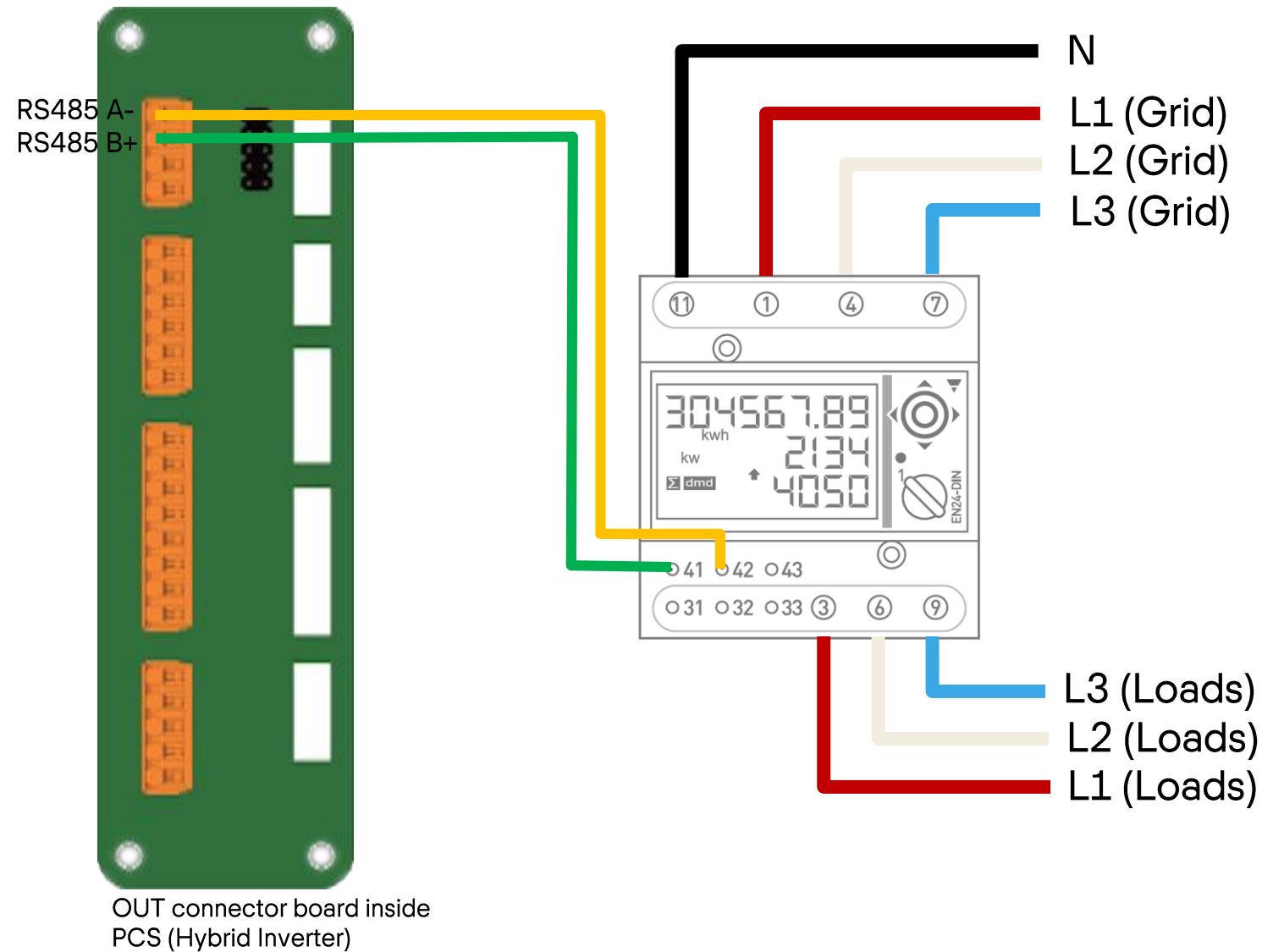
To enter programming mode



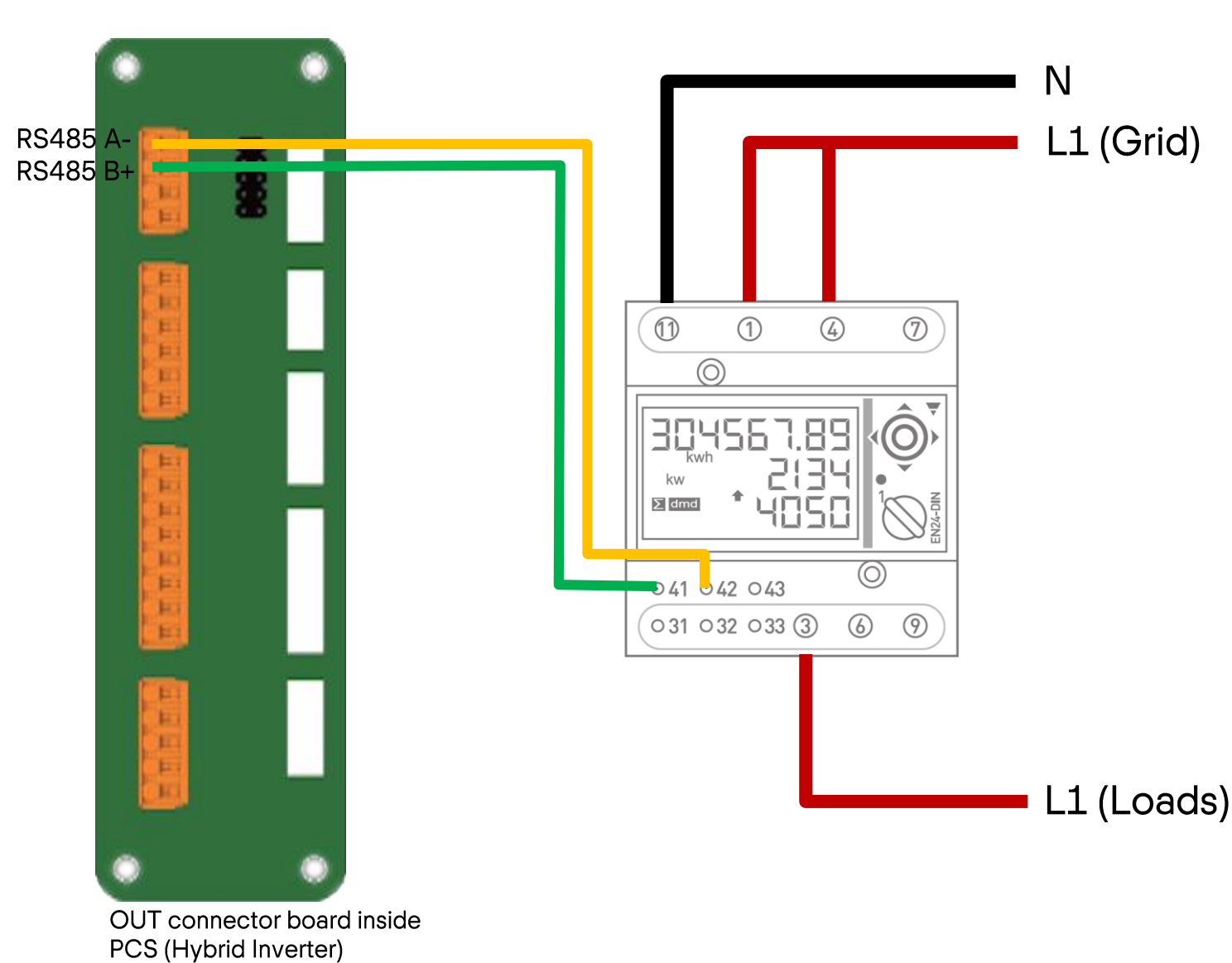
PARAMETERS	CODE	Default	New SETTINGS
PASS	P1	0000	0000
nPASS	P2	0000	0000
MEASurE	P3	A	b
P int	P4	1	1
Mode	P5	Full	Full
Tariff	P6	No	Yes
Home	P7	0	0
Address (S1 option)	P10	1	1
bAud (S1)	P11	9.6	9.6
ParltY (S1)	P12	No	No
RESET	P13	No	No
End		Exit	Exit



# EM24 Wiring connections (Three Phase)

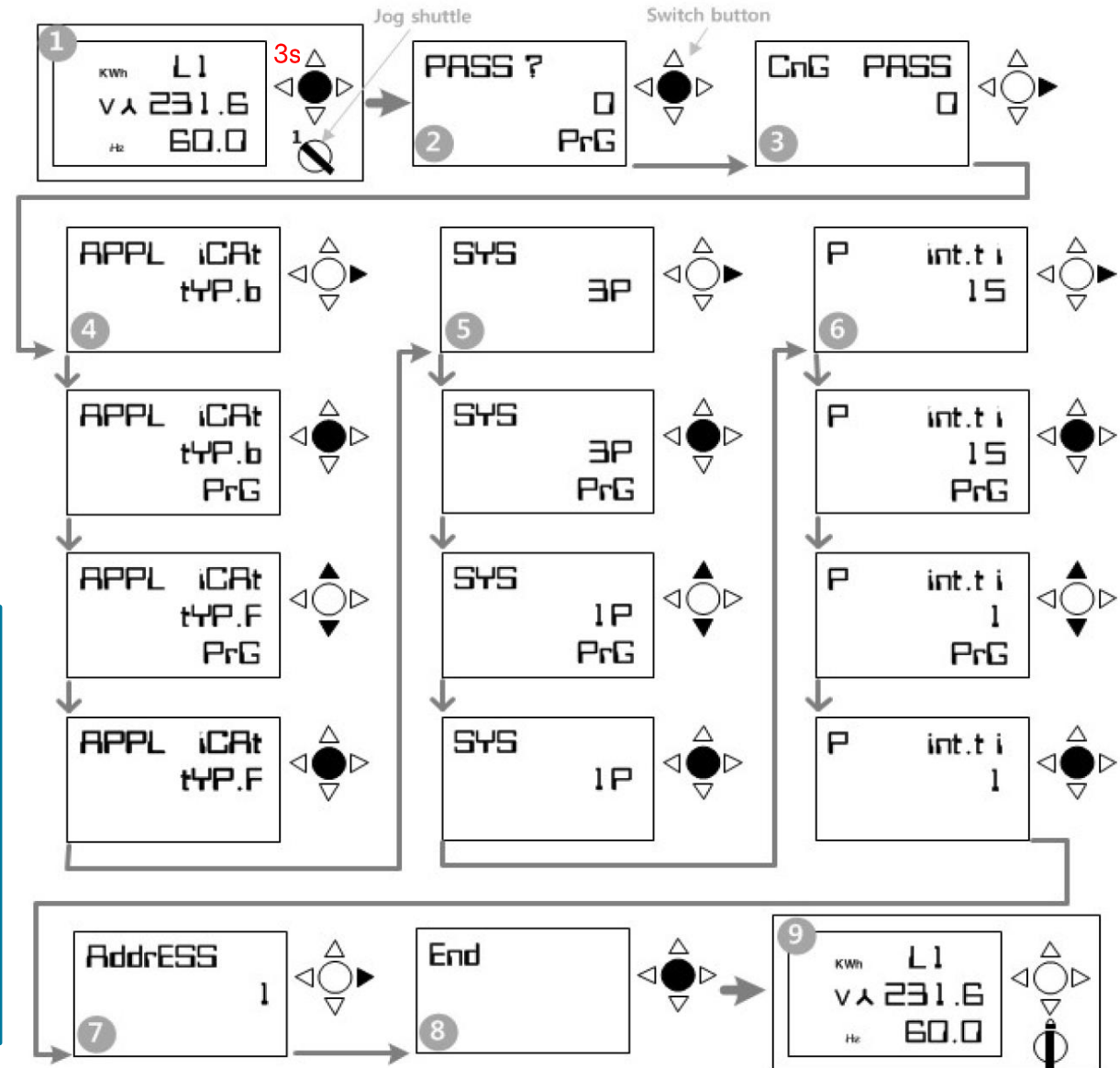
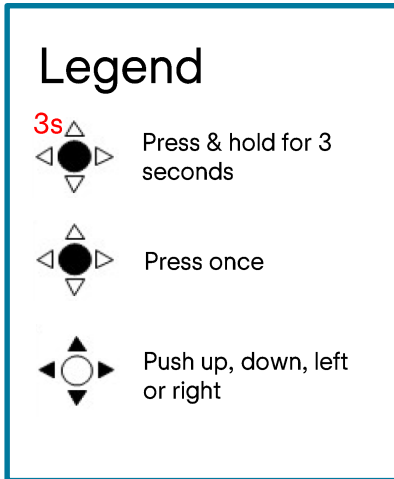
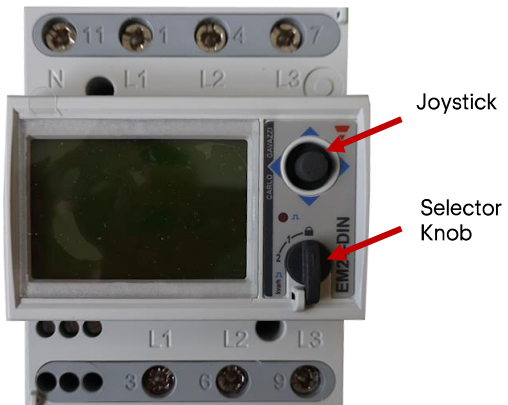


# EM24 Wiring connections (Single Phase)

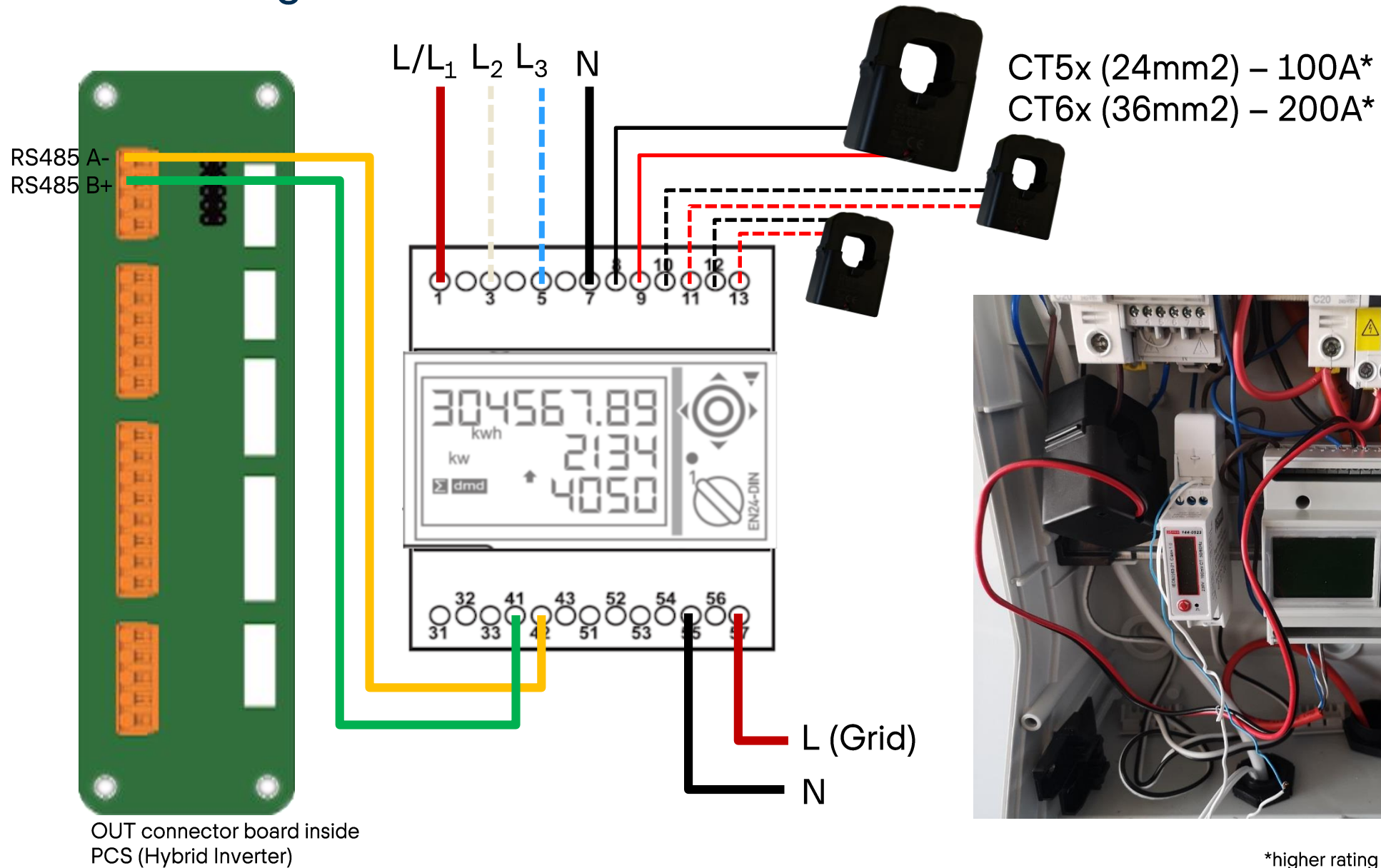


# EM24 Settings configuration

PARAMETERS	CODE	Default	New SETTINGS
Password	Pass	0000	0000
Application type	APPLICAt	b	F
Page selection	Selector 1;2;3	1;28;31	1;28;31
System	SyS	3P.n	3P.n, 2 or 1
Power integration time	P int.ti	15	1
Digital input 1	diG in 1	Sync	Sync
Digital Input 2	diG in 2	Sync	Sync
Digital Input 3	diG in 3	Sync	Sync
Address	AddrESS	1	1
Reset of all counters (PW 1357)	Ene t.rEs	No	No
Exit and save	End		



# EM24 CT wiring connections



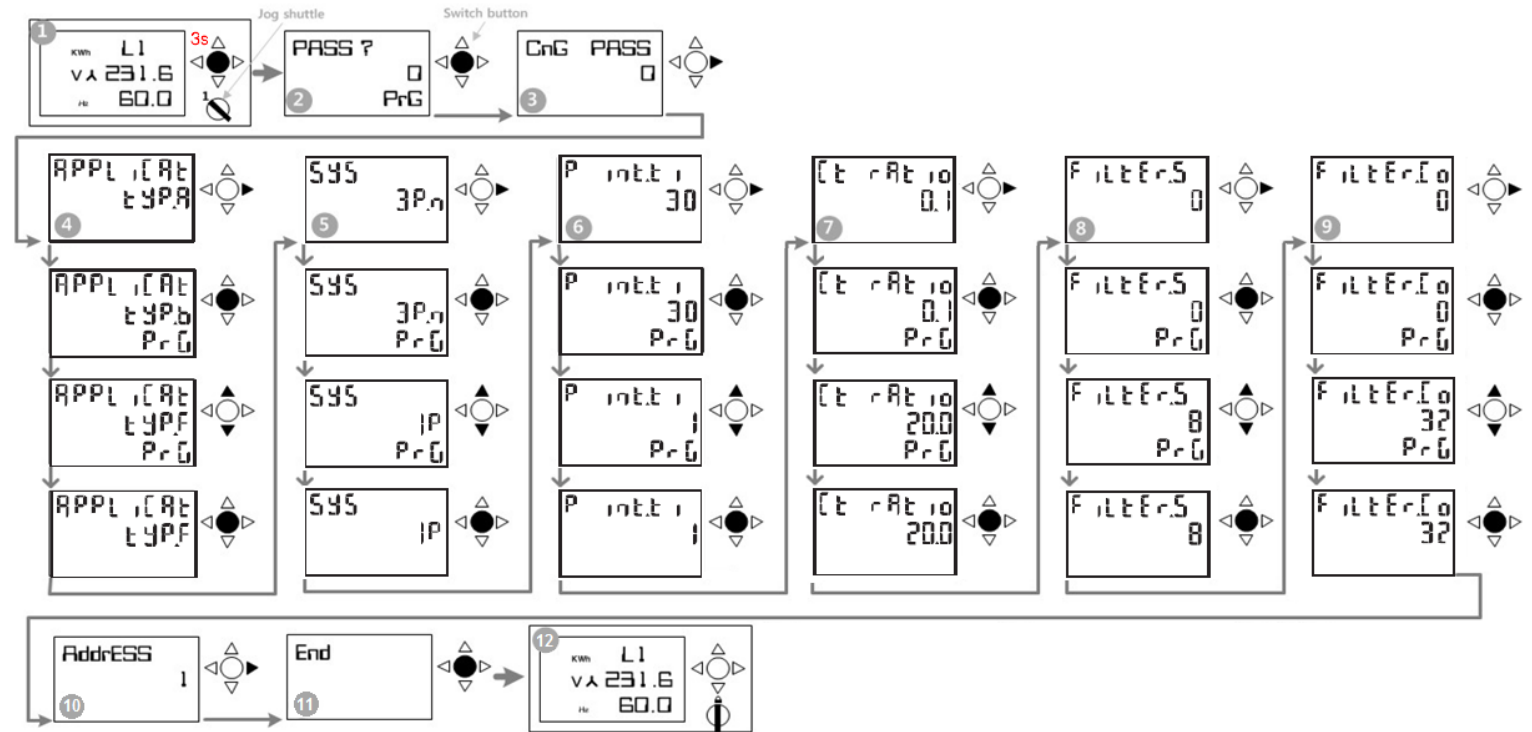
\*higher rating is available upon request

# EM24 CT Setting Configuration

PARAMETERS	CODE	Default	New SETTINGS
Password	Pass	0000	0000
Application type	APPLICAt	b	F
Page selection	Selector 1;2;3	1;28;31	1;28;31
System	SyS	3P.n	3P.n, 2 or 1
Voltage transformer ratio	Ut rAtio	1	1
Current transformer ratio	Ct rAtio	1	20 (CT5X100A)
Power integration time	P int.ti	15	1
Digital input 1	diG in 1	Sync	Sync
Digital Input 2	diG in 2	Sync	Sync
Digital Input 3	diG in 3	Sync	Sync
Digital filter (%)	FiLteRS	2	8
Digital filter coefficient	FiLteR.Co	2	32
Address	AddrESS	1	1
Reset of all counters (PW 1357)	Ene t.rEs	No	No
Exit and save	End		

Based on CT version 5X - 100A rating  
(Primary : 100A, Secondary : 5A)

Ex) CT ratio = Primary / Secondary, 100A/5A = 20





# SWITCHDIN CONNECTION GUIDE



# Droplet Placement



**Option 1:**  
Mounted with the Q Home system.

**Note:** If mounted outside the Droplet should be enclosed in a suitable enclosure.



**Option 2:**  
Mounted with the electrical switchboard. (ensure installation complies with AS3000)



**Option 3:**  
Mounted within the home near the home internet router.



## Option 1:

Connect the Micro USB power pack to the micro USB port of the Droplet and plug the power pack into a 240v GPO. (Power pack included with Droplet)

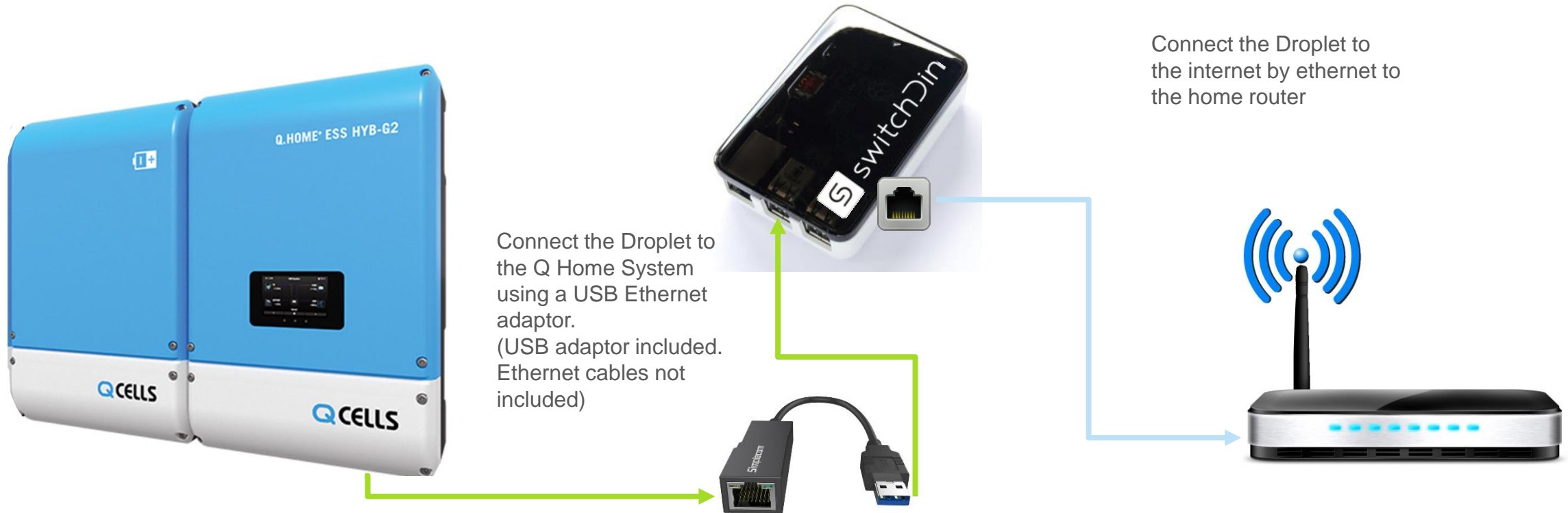


## Option 2:

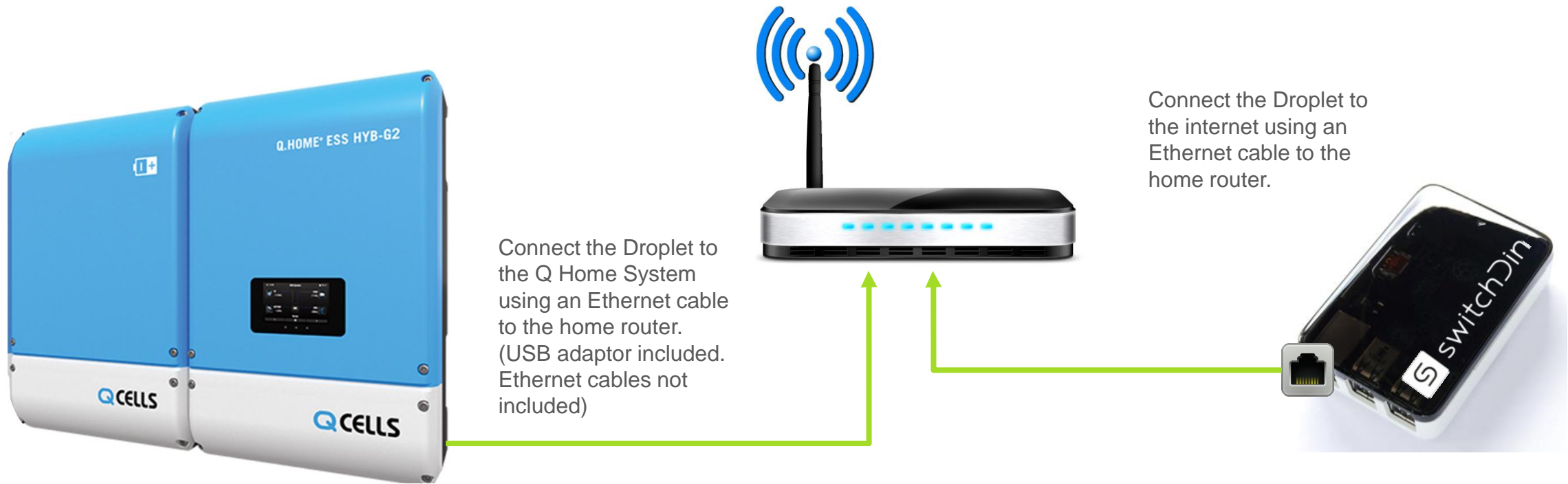
Connection via a switchboard DIN mounted 240vAC to a 5vDC power supply using a micro USB connection lead, plugging the lead into the micro USB port of the Droplet. (DIN mount power supply and lead not included)



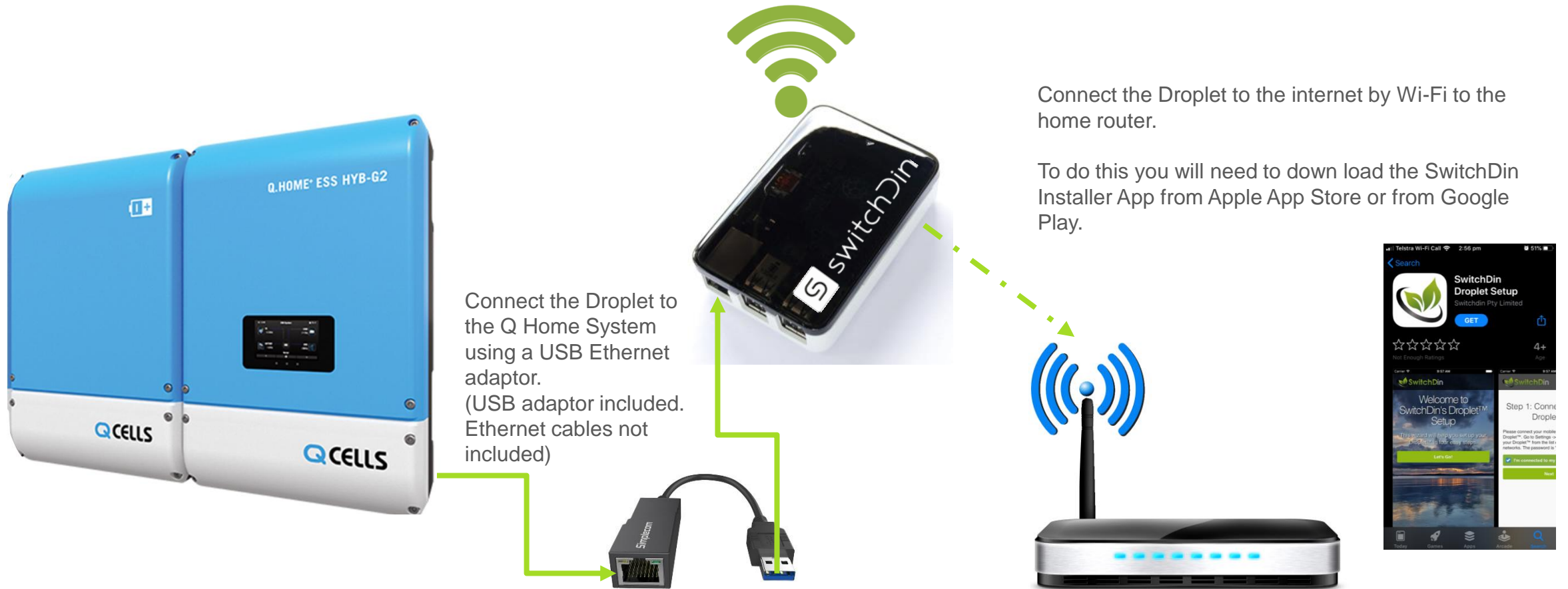
# Connecting the Droplet (Home Internet –LAN)



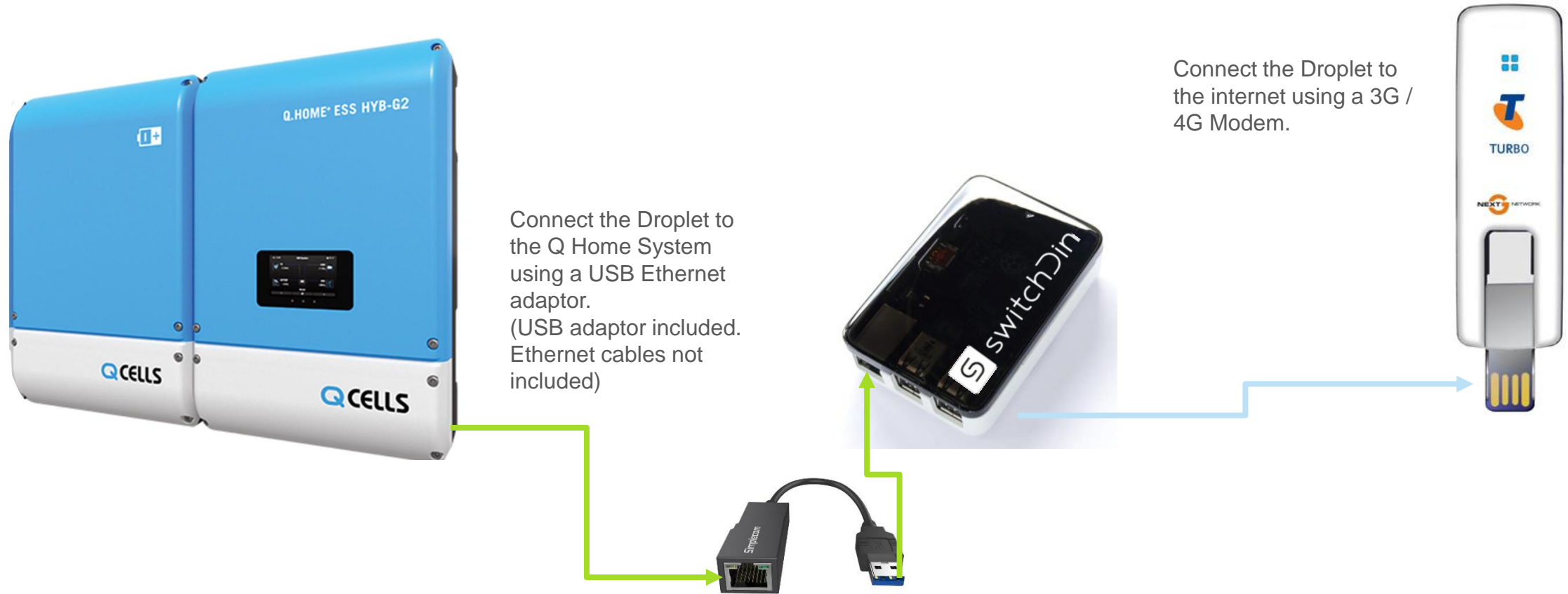
# Connecting the Droplet (Home Router)

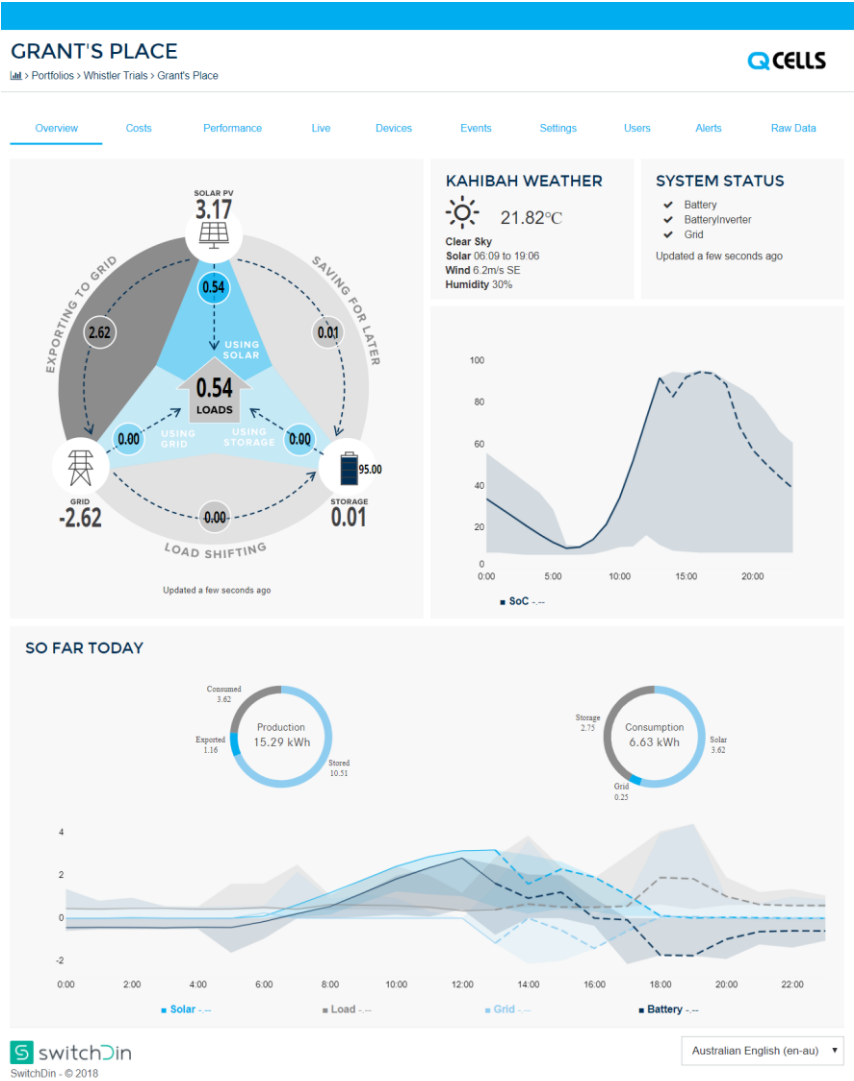


# Connecting the Droplet (Home internet – Wi-Fi)



# Connecting the Droplet (Droplet Internet – GSM)





The Droplet comes Q Home configured and is simply plug and play.

If you are a SwitchDin Trained Q Home Installer, you will be able to set up a new user unit within StormCloud.

If you haven't received SwitchDin training you will need to contact SwitchDin Customer Support for assistance.

SwitchDin Customer Support Line: 02 4786 0426

# BATTERY COMMISSIONING

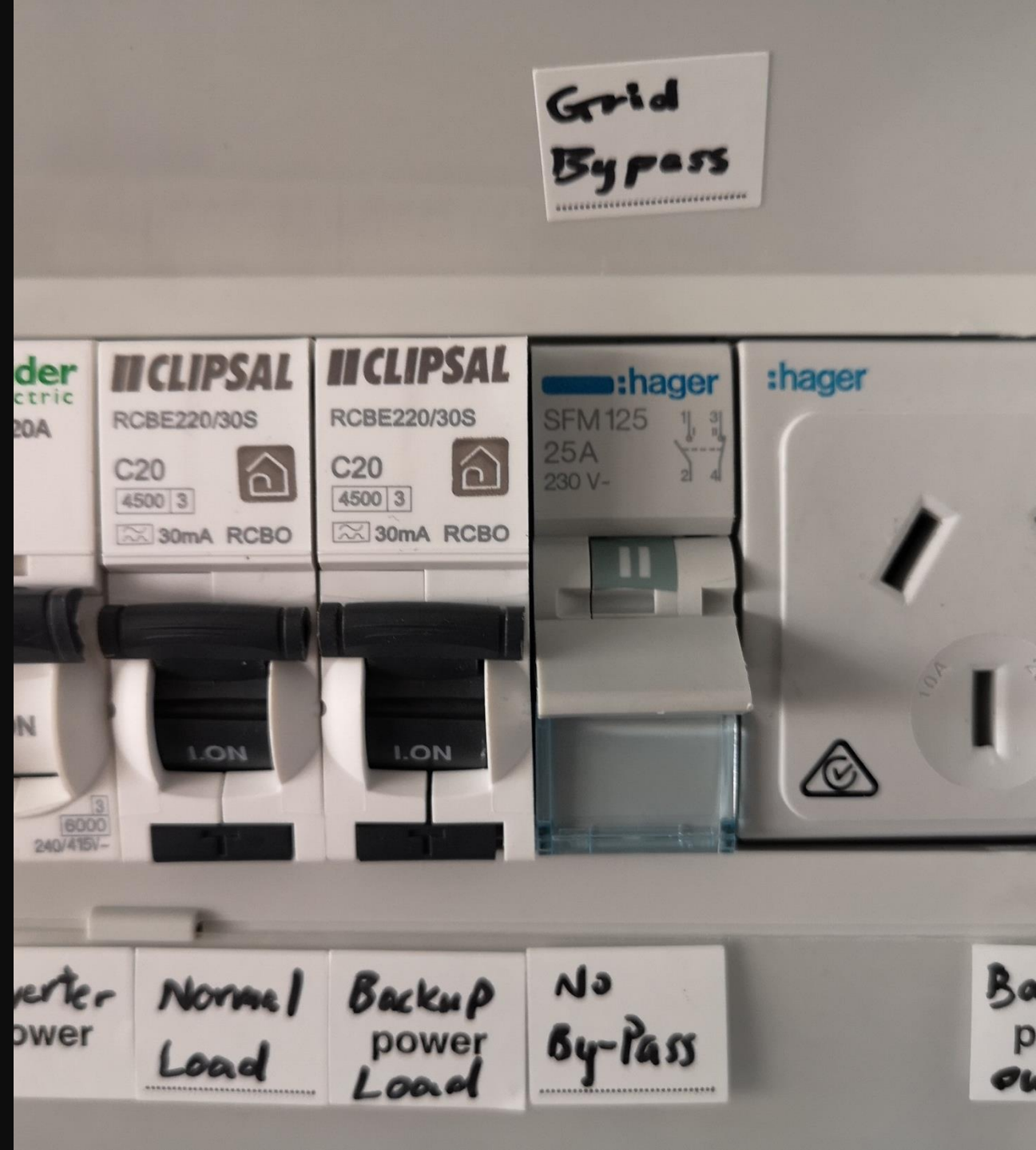




Link: <https://youtu.be/v8ZlgV6Dd94>



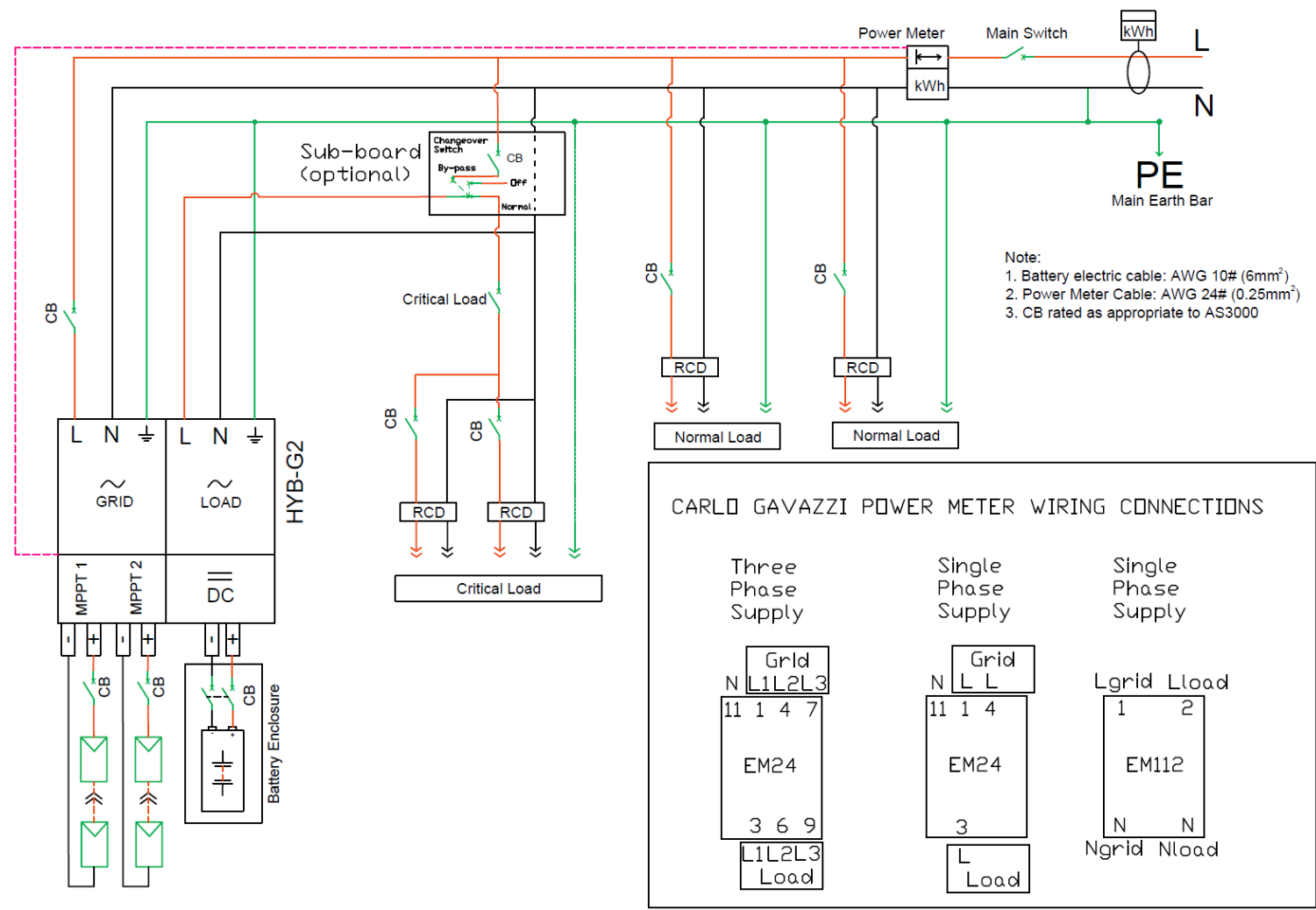
# BY-PASS SWITCH (OPTIONAL)





# By-pass Switch SLD

For maintenance or in the event where system need to be shut down and continuing power supply to the customer's backup circuit



Sample options:



Option 1 (Clipsal)



Option 2 (Hager)

# Q&A

