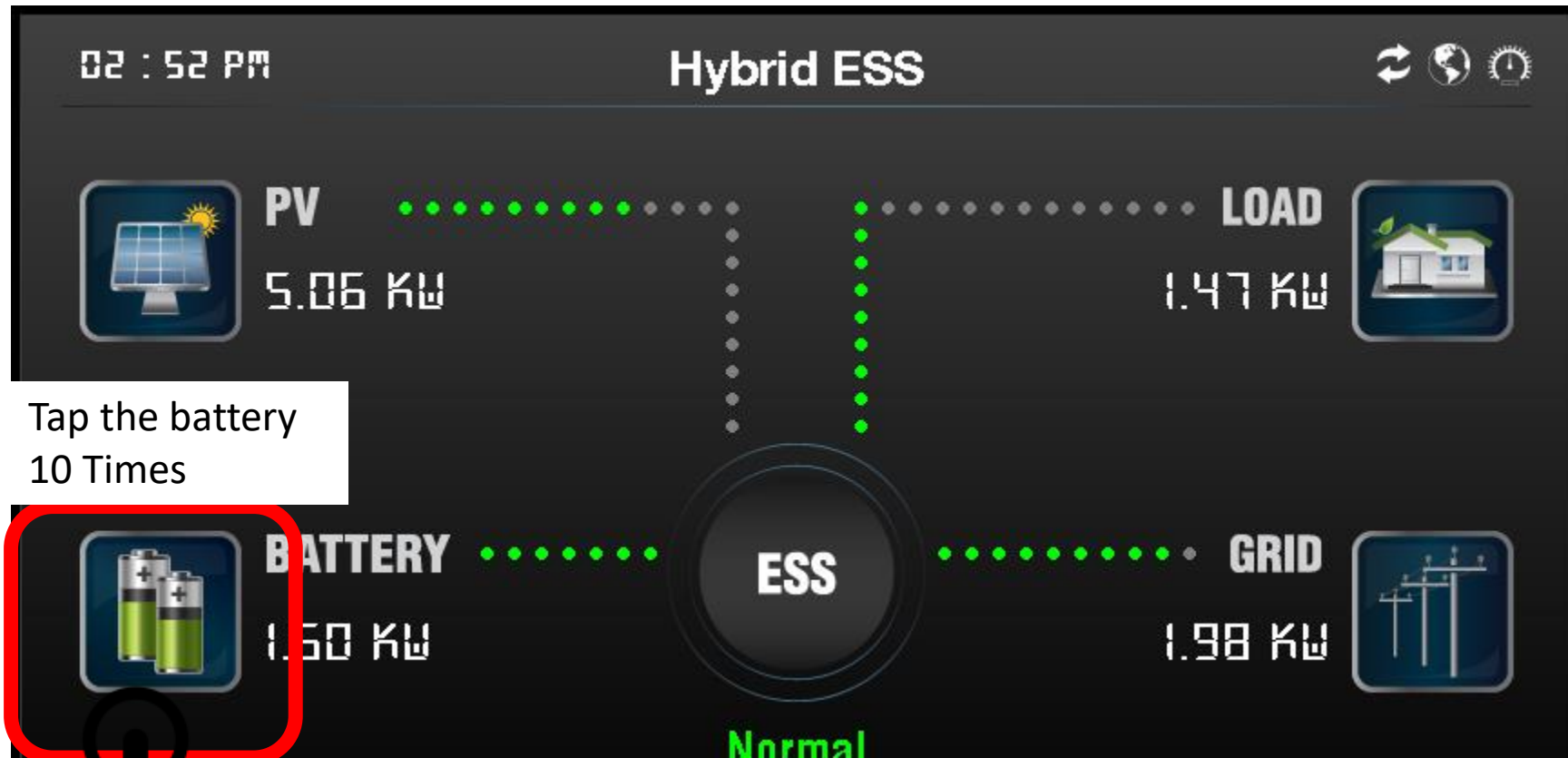


Commissioning Battery

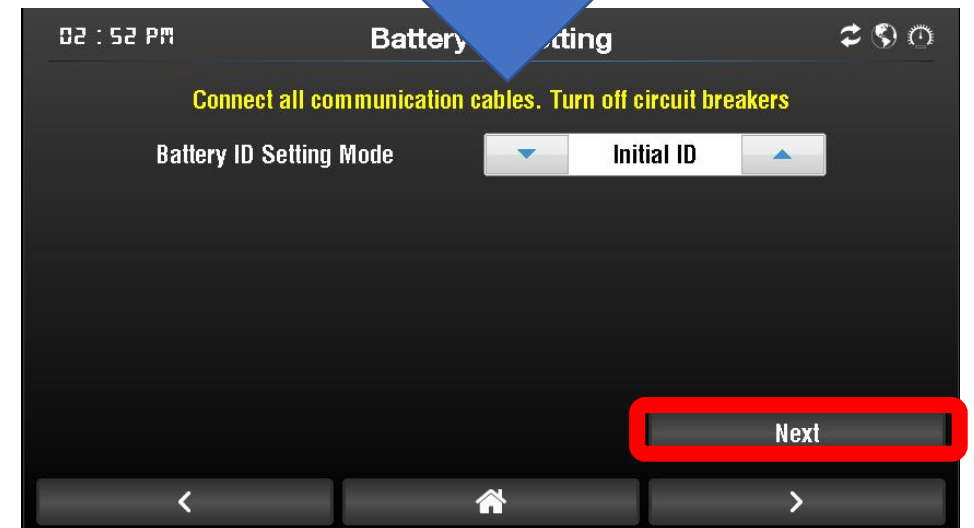
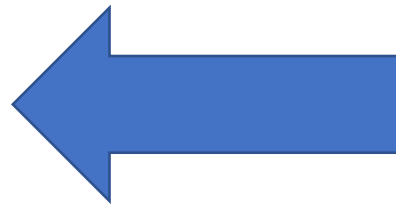
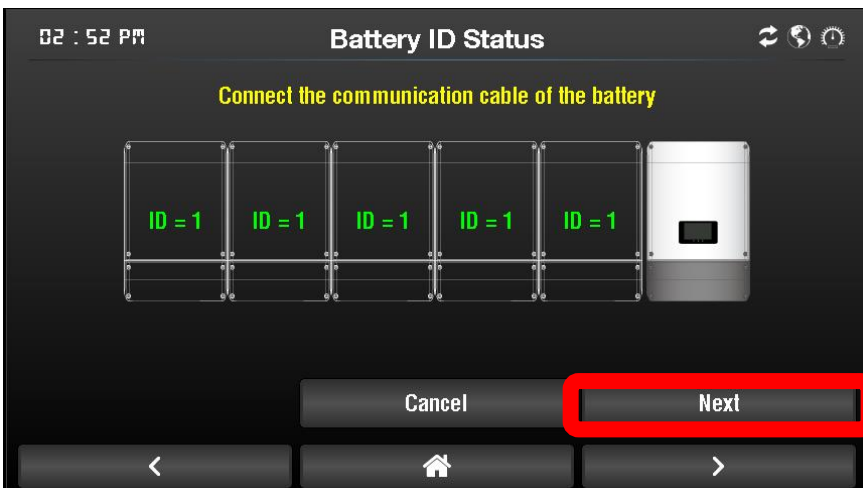
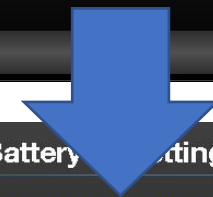
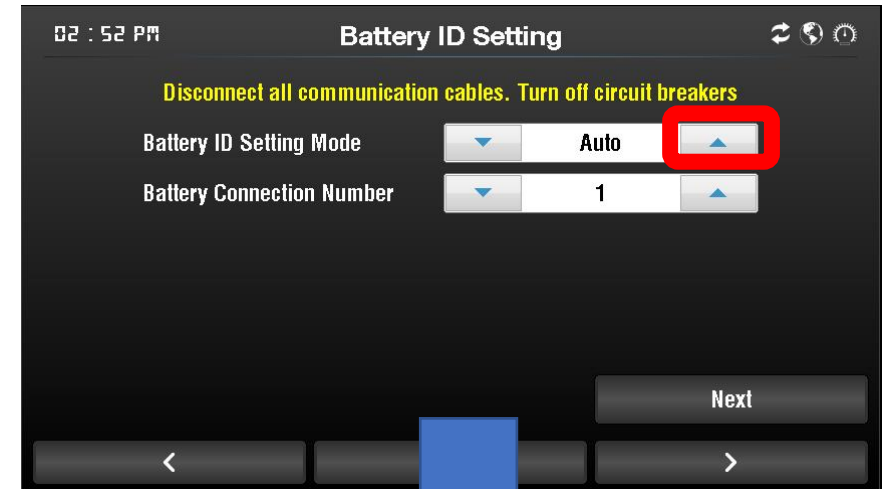
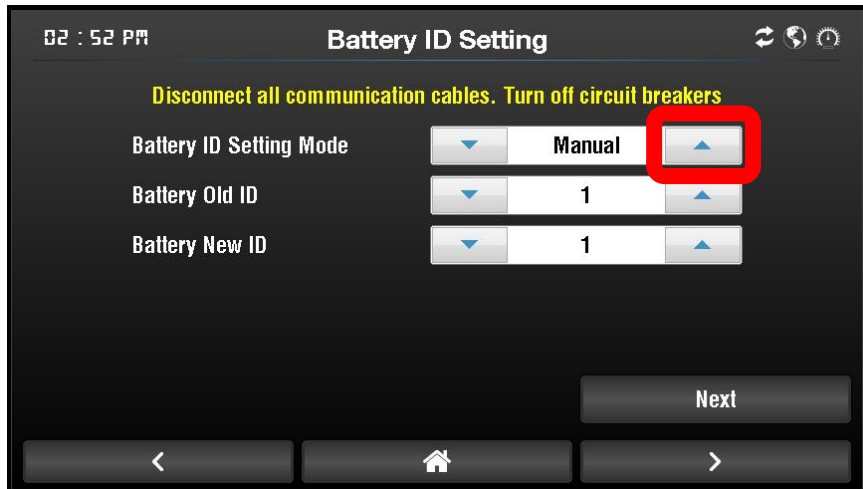
By Felix

On the inverter screen.

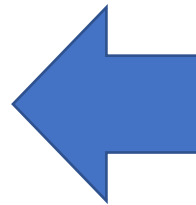
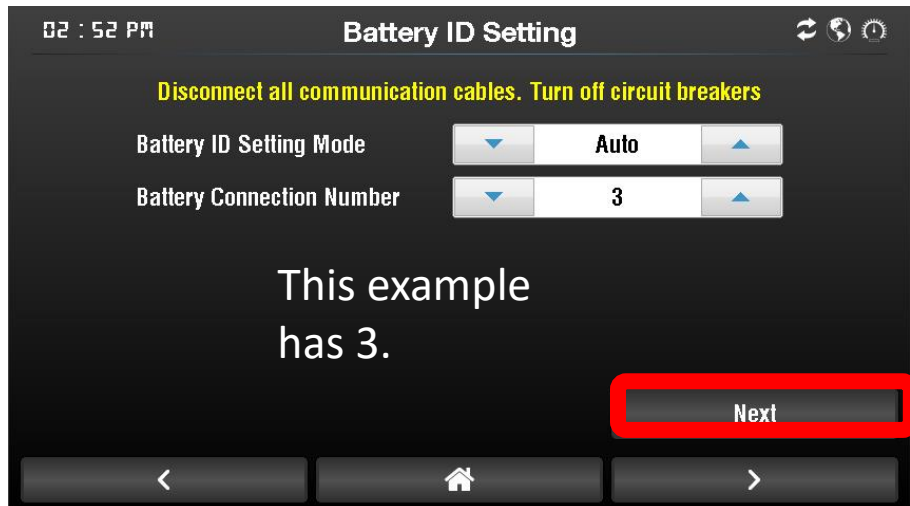
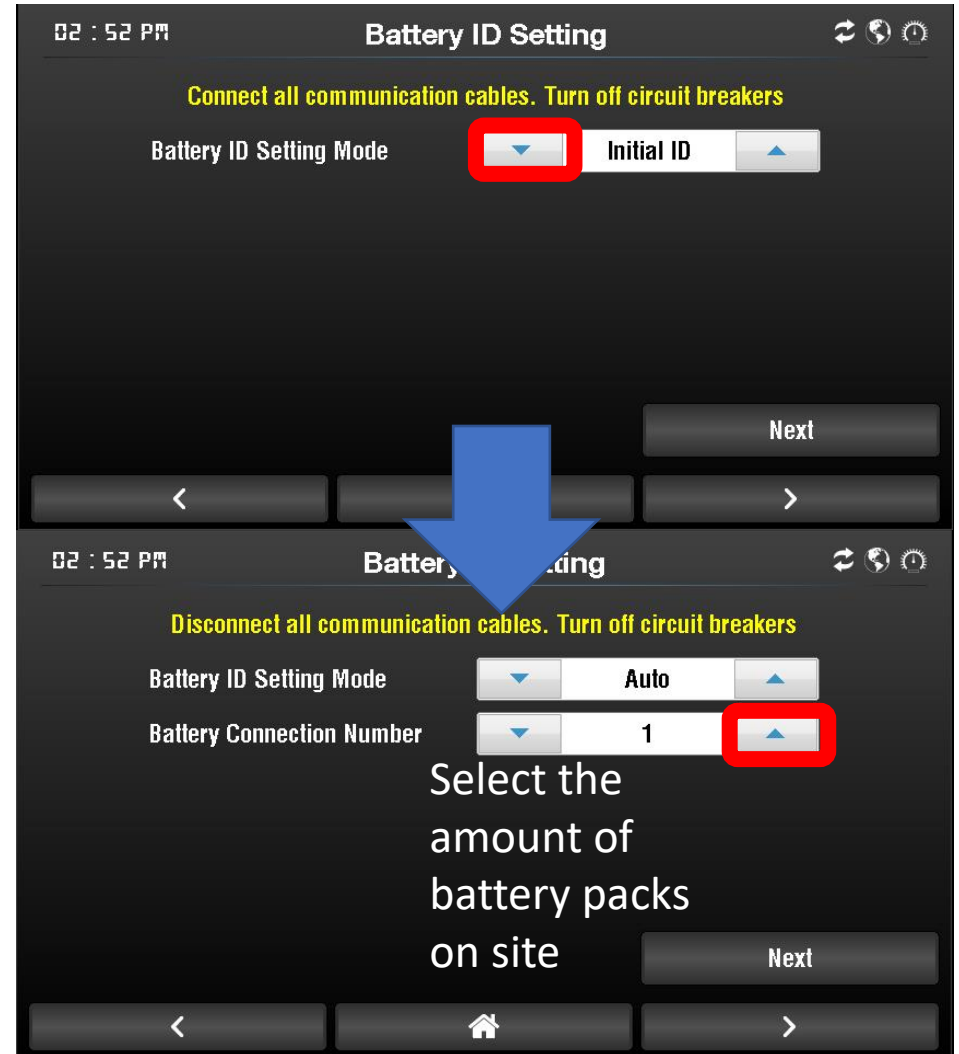
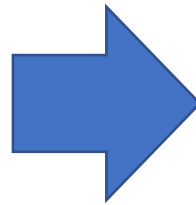
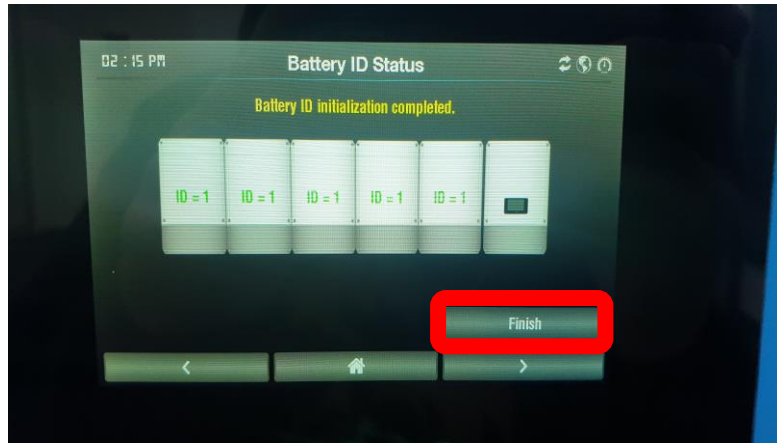


Tap the battery
10 Times

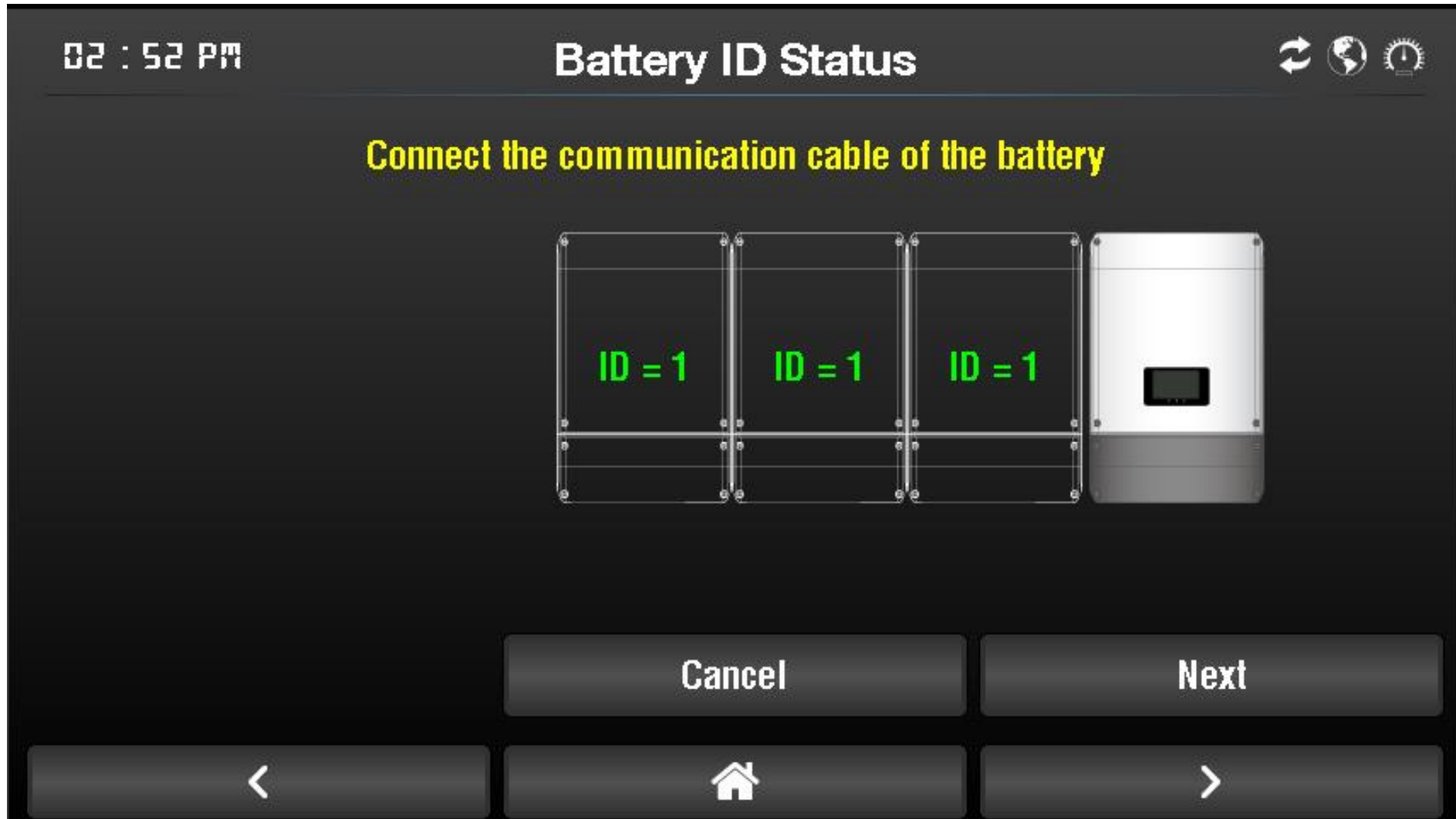
First initialize the batteries



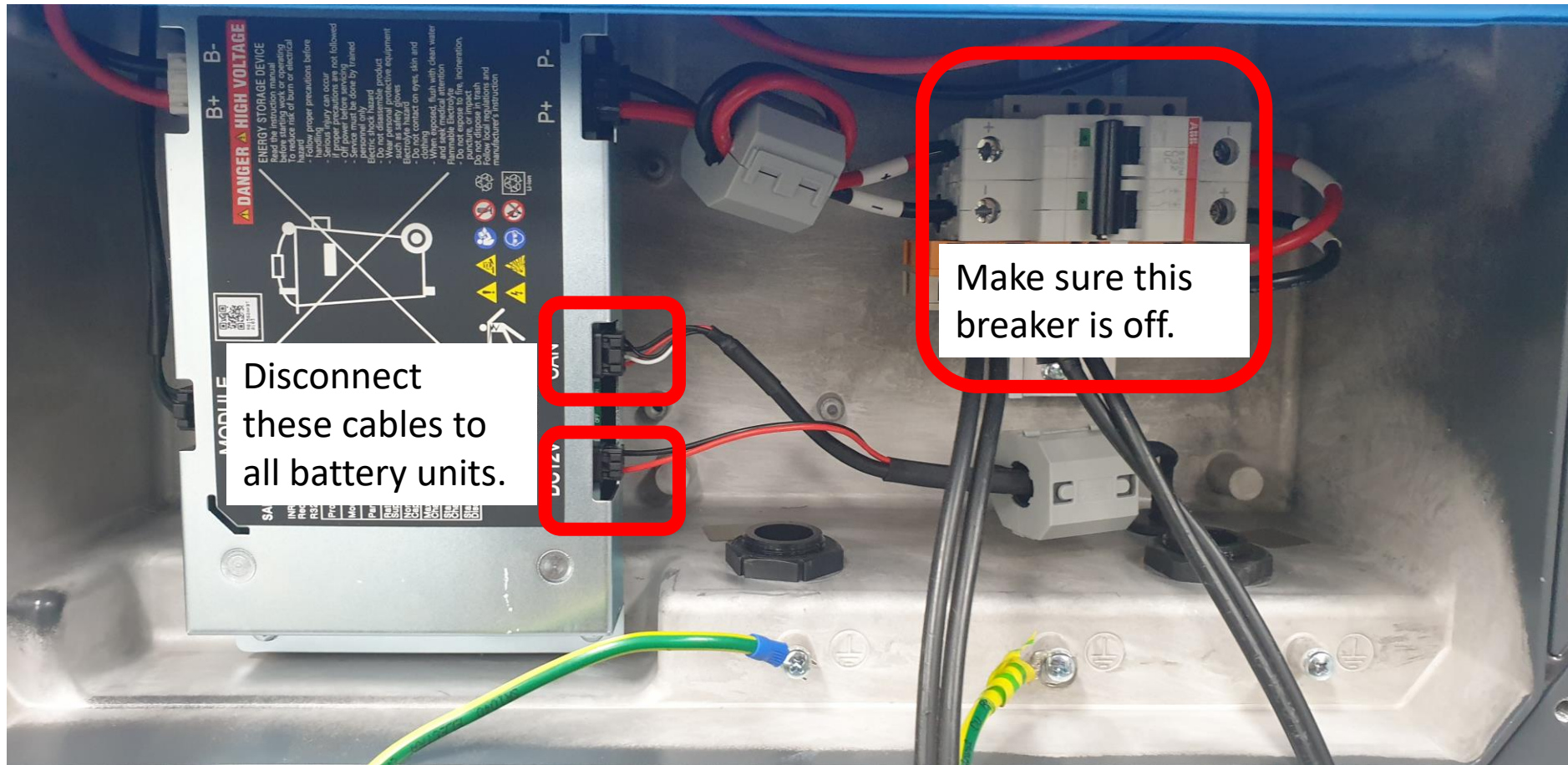
Setting up the batteries



At this page, make sure every breaker is turned off. (NEXT SLIDE)

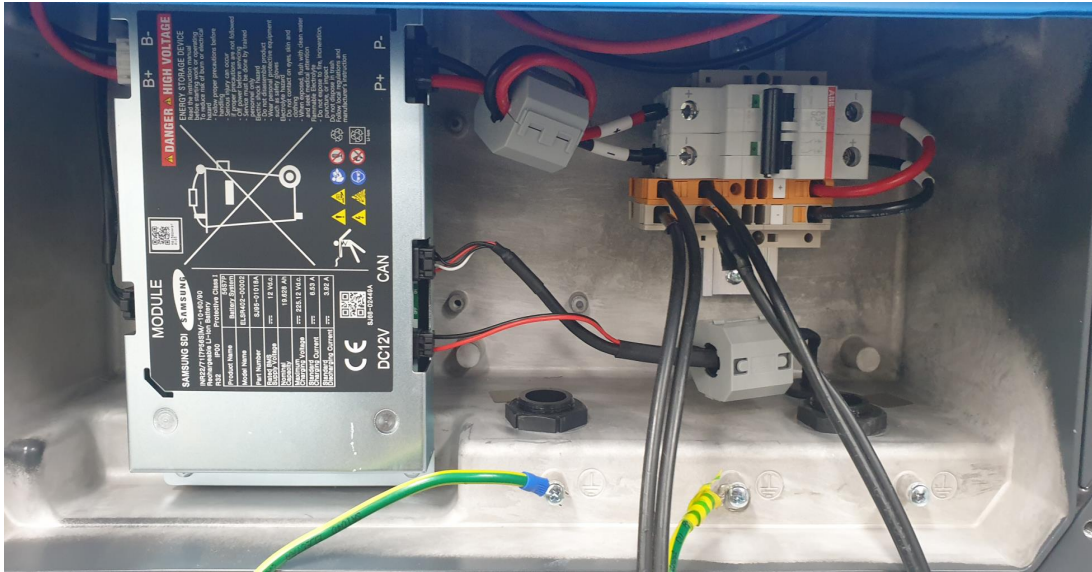


In the battery.

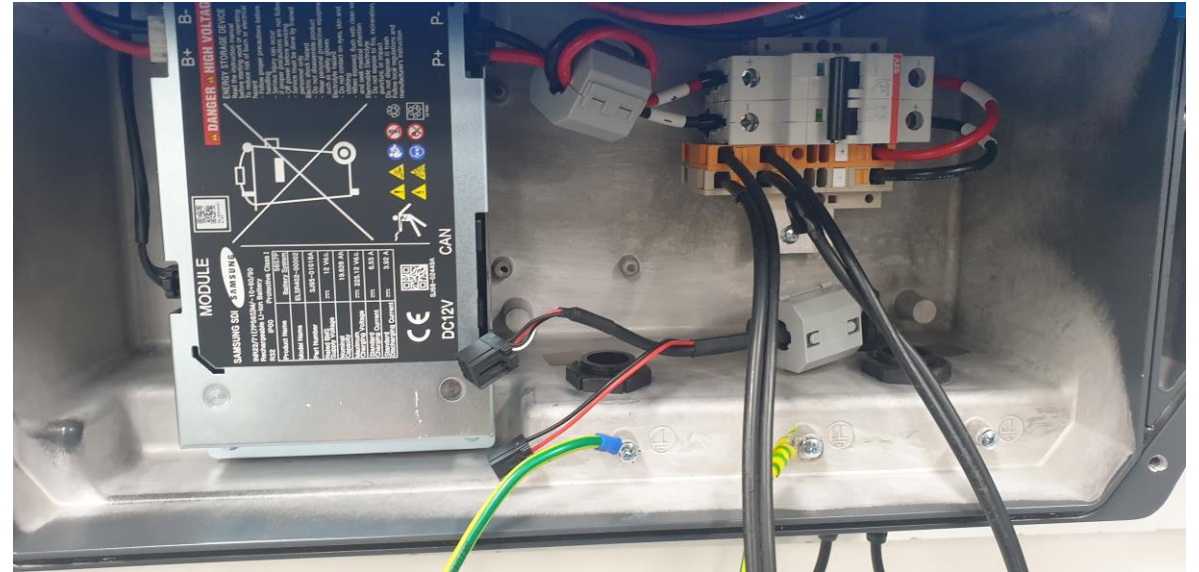


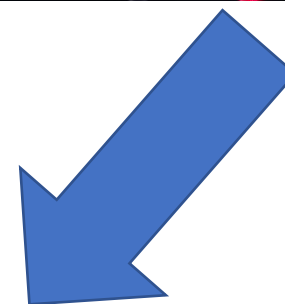
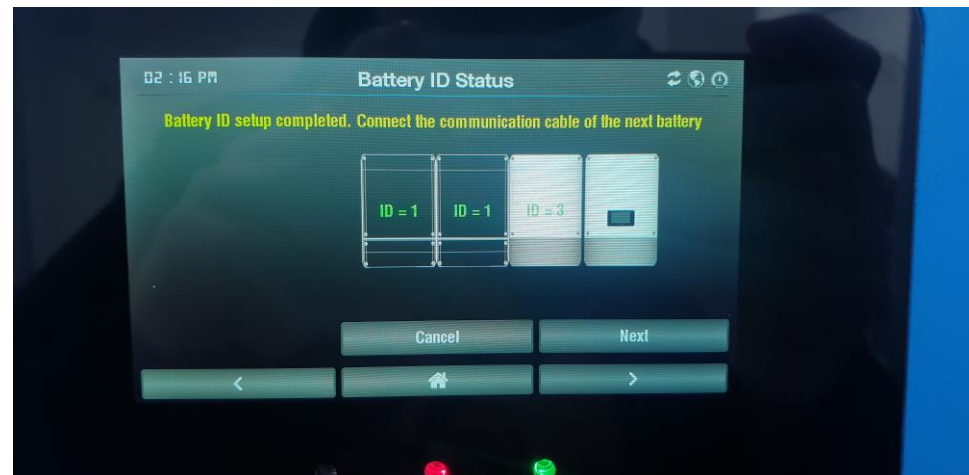
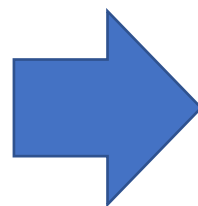
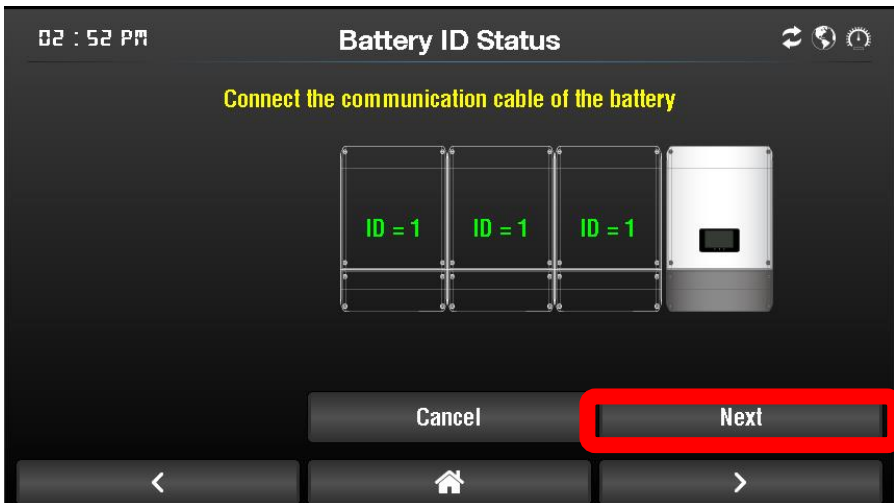
In this example:

FIRST BATTERY CONNECTED



SECOND AND THIRD BATTERY DISCONNECTED





Disconnect the first battery, **connect** the second battery. Then press **NEXT**.

Repeat with the other batteries. So at any time there would be one battery connected during the commissioning phase. Once completed, please connect all batteries cables, ensure the DC cables are correct before turning on the batteries.

